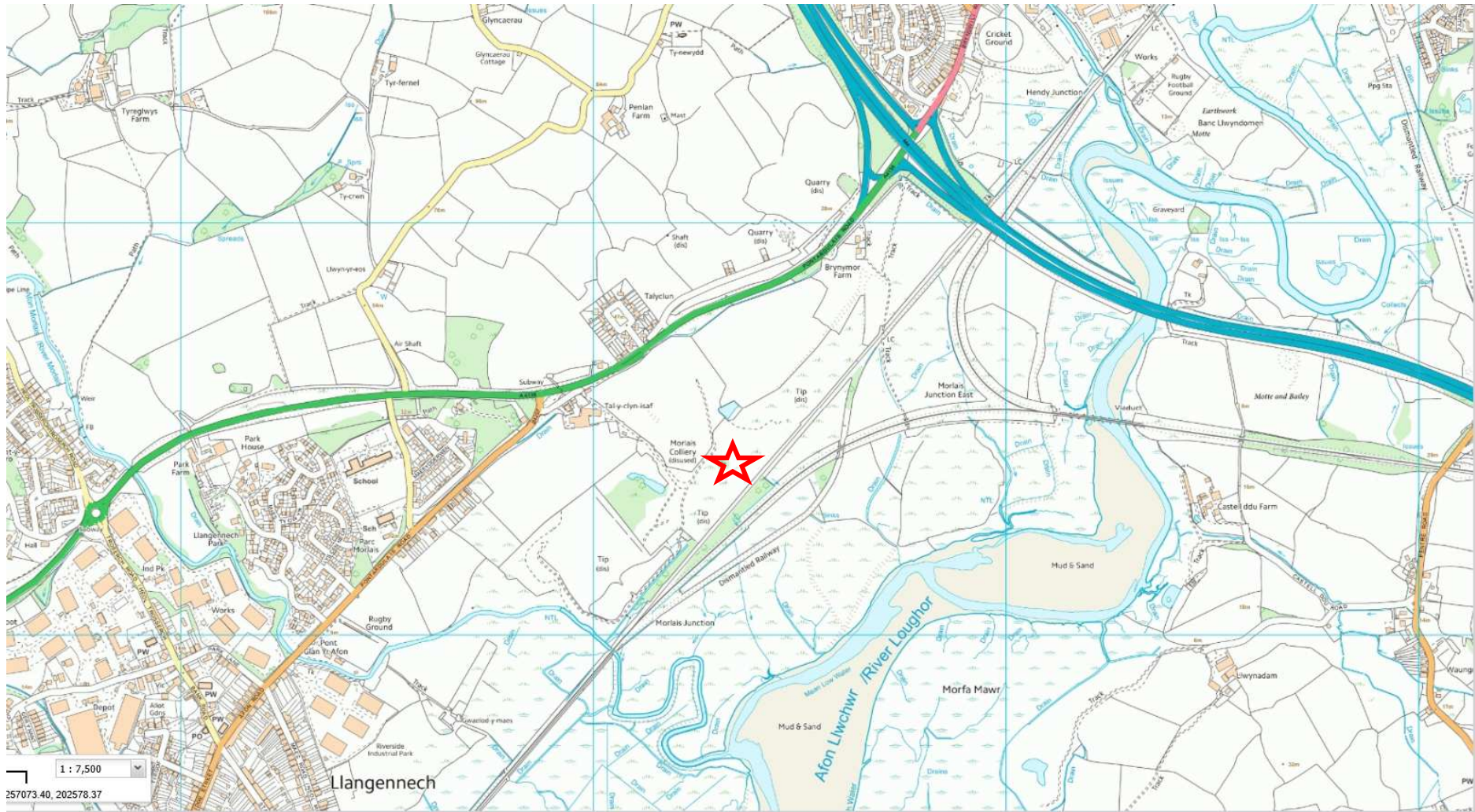




S/34071

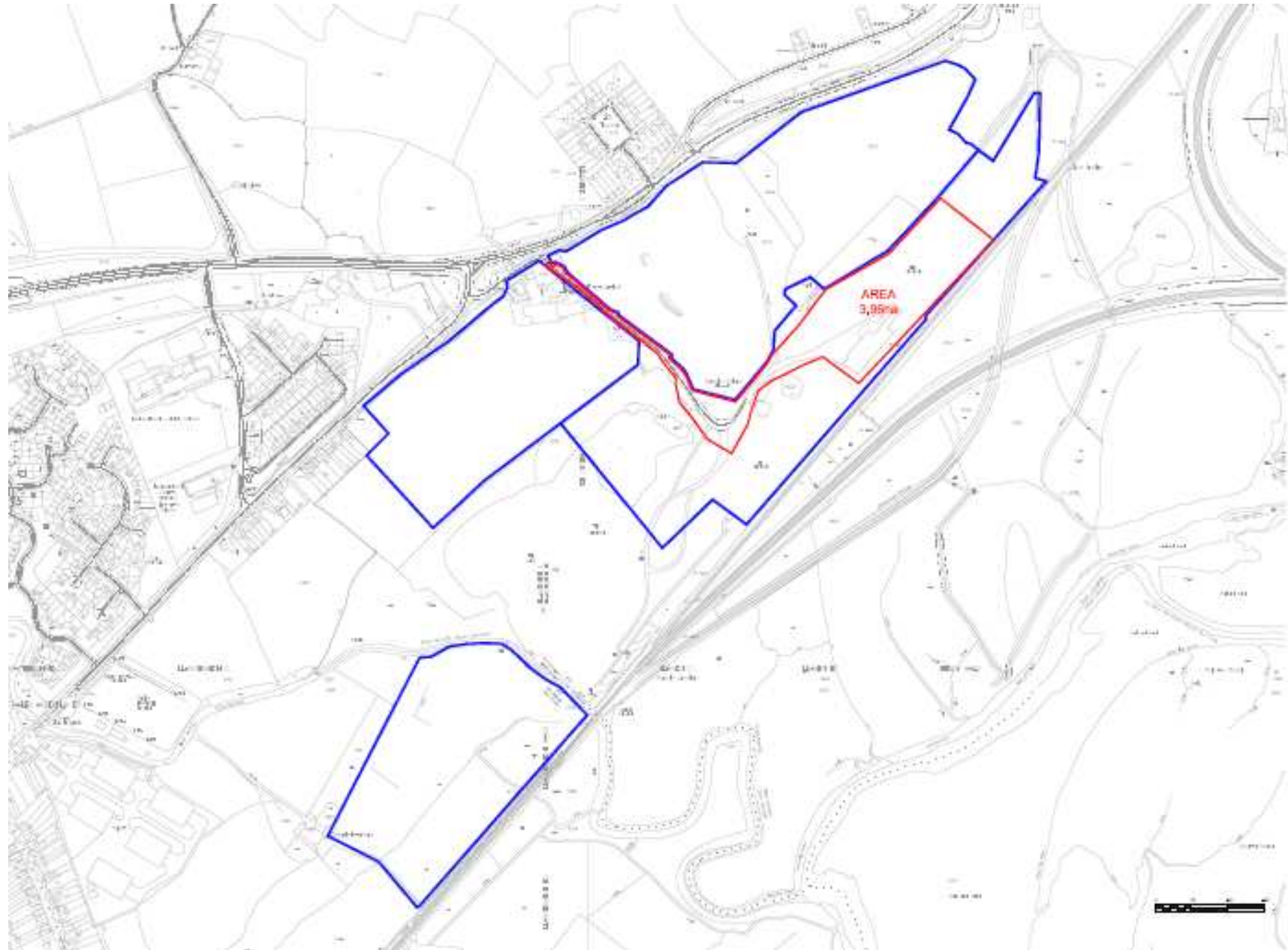
S/34071



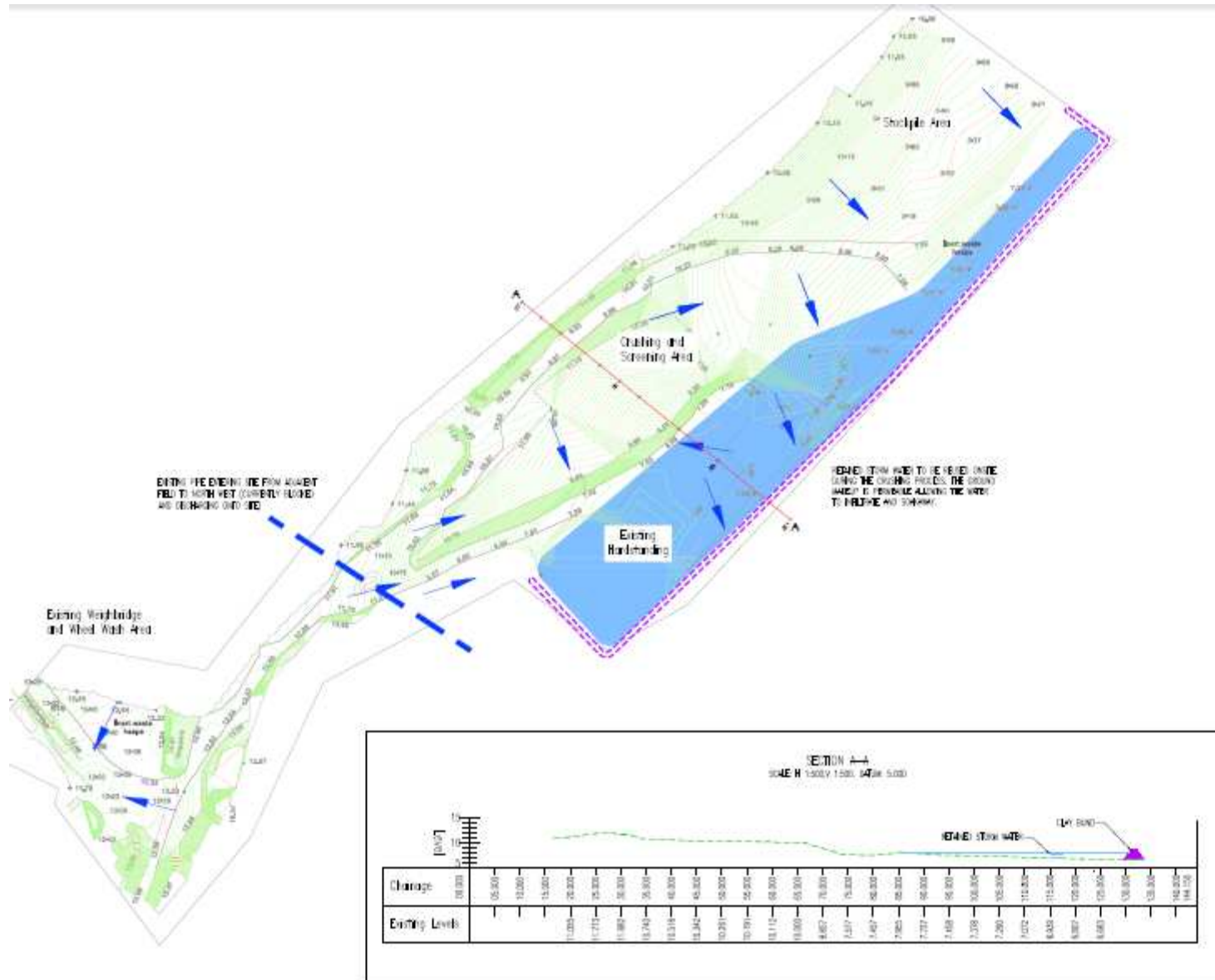
S/34071



S/34071



S/34071



1. ALL DIMENSIONS ARE IN METRES UNLESS NOTED OTHERWISE
2. ALL LEVELS ARE IN METRES UNLESS NOTED OTHERWISE
3. ALL LEVELS REFER TO DATUM UNLESS NOTED OTHERWISE
4. DO NOT SCALE FROM THE DRAWING UNLESS NOTED OTHERWISE
5. ANY DIMENSIONS TO BE REPORTED SHOULD BE TO THE CENTER
6. THE DRAWING TO BE VIEW IN CONJUNCTION WITH ALL RELEVANT AGREEMENTS, SUBCONTRACTS AND SPECIFICATIONS AND SPECIFICATIONS
7. THE DRAWING IS COPYRIGHT © INTRADO ROBBS CONSULTING ENGINEERS

LEGEND

- OVERLAND FLOW DIRECTION
- AREA OF POSSIBLE FUTURE STORM WATER
- LINE WITH CLAY BAND

REV.	DESCRIPTION	BY	DATE
01			

intrado robbs
Consulting Engineers

Staff
JCR PLANNING

Project
FORMER MORLAIS COLLIERY, LLANGENNECH

As Issued
PROPOSED SITE LAYOUT PLAN

Client
CILC

Contract No.
10002842

Issue Date
APR 2016

Subcontract No.
IR16070

Sheet No.
001

Total Sheets
B

S/34071



EXISTING HEDGEROW ALONG NORTH-WESTERN BOUNDARY OF SITE REQUIRES JUDICIOUS MANAGEMENT AND RENOVATION INCLUDING "GAPPING-UP", COPPING, LAYING AND DEAD WOOD REMOVAL.

DOMINANT SPECIES - CRATAEGUS MONOGYMA

**NATIVE HEDGEROW GAPPING UP
- DOUBLE STAGGERED ROW**

PLANTS OF NATIVE SPECIES SHOULD BE SMALL BUSHY HEDGING TRANSPLANTS (450MM - 800MM) PLANTED 250MM APART - AND IN A DOUBLE-STAGGERED ROW - 300MM APART (APPROX. 9 NO PLANTS PER METRE)

PLANTS TO BE NOTCH PLANTED INTO EXISTING GROUND AND WATERED

MULCH THE BASE OF THE HEDGE AFTER PLANTING TO RETAIN MOISTURE AND REDUCE WEED COMPETITION.

PROTECT FROM STOCK WITH FENCING.

ALLOW TO GROW FOR MIN 3 YEARS BEFORE STAGED LAYING

HEDGEROW MIX

CRATAEGUS MONOGYMA (HAWTHORN) TRANSPLANT	85%	BR	1+2,
CORYLUS AVELLANA (HAZEL) 2 . BRANCHED, 4 BREAKS	10%	BR	1 +
ILEX AQUIFOLIUM (HOLLY) LEADER WITH LATERALS	2%	3L	
DOG ROSE (ROSA CANINA) 1, 60 - 80 CM, 3 BREAKS	3%	BR	1 +

HEDGEROW REJUVENATION

LAND AT FORMER MORLAIS COLLIERY,
LLANGENNECH

SCALE 1:200 @ A3
DRAWING NO GEN/JG/18/06/125

JULY 2018



S/34071



S/34071



S/34071



S/34071



S/34071



S/34071



2016. 7. 7 13:14

S/34071



S/34071



S/34071



2016. 7. 7 13:21

S/34071



S/34071



S/34071



S/34071



S/34071



S/34071



S/34071



S/34071



S/34071

